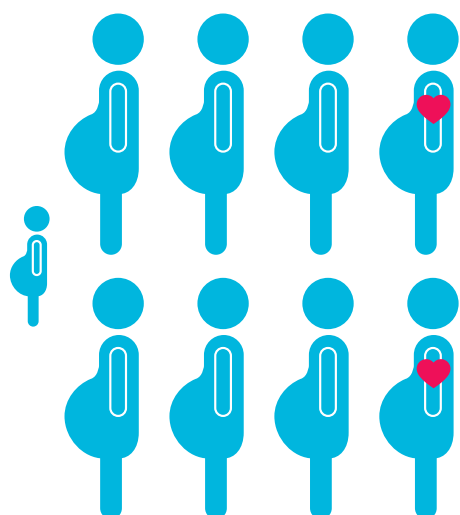


Key messages

from the report 2016



8.5

women per 100,000 died during pregnancy or up to six weeks after giving birth or the end of pregnancy in 2012 - 14

2

women per 100,000 died from **heart**  **disease**

Heart disease can happen



Women known to have **heart disease** are **high risk** and need specialist care

Persistent breathlessness when lying flat is **not normal** in pregnancy and may mean heart problems



Be aware severe **chest pain** spreading to the left arm or back may be **cardiac**

Good care makes a difference

Less than **1 woman in every million** who gives birth now dies from **pre-eclampsia**, but to detect it blood pressure and urine must be checked at every antenatal visit

