



Royal College of  
Obstetricians  
and Gynaecologists

# UKOSS

UK Obstetric Surveillance System

**NPEU**

## NEWSLETTER 78 - April 2026

### Got an idea for a new UKOSS study?

If you have had an idea that could become a new UKOSS study topic but aren't sure how to get started, the UKOSS team is here to support you through the process.

#### Have an idea?

First, check your study proposal fulfils the criteria listed on our website ([www.npeu.ox.ac.uk/ukoss/research-platform/survey-applications](http://www.npeu.ox.ac.uk/ukoss/research-platform/survey-applications)). Then complete a Preliminary Application form which will be considered by the UKOSS Steering Committee for suitability.

#### Who can start a UKOSS study?

New study applications are welcomed from all clinicians and other researchers with an interest in improving maternity care and outcomes for mothers and babies.

#### What's next?

If the project is approved, you will be invited to submit a full application which will be reviewed by the UKOSS Steering Committee (who meet three times a year).

#### What about funding?

If your study is accepted onto the UKOSS programme, you will be expected to obtain funding prior to the study being included on the monthly report requests. The Steering Committee is happy to advise if you need guidance on funding applications or identifying appropriate funders.

#### Do I need ethics approval?

You do not need to worry about obtaining ethical approval as UKOSS already holds REC approval (10/H0717/20) and the team will make a substantial amendment to this to include any new study.

Full details, including the Study Application Guide, are available on our website: [www.npeu.ox.ac.uk/ukoss/research-platform/survey-applications](http://www.npeu.ox.ac.uk/ukoss/research-platform/survey-applications).

Have an idea or a question? Get in touch at [ukoss@npeu.ox.ac.uk](mailto:ukoss@npeu.ox.ac.uk) we'd love to hear from you!

*Laura Goodfellow was one of the study leads for the EPPROM study and has this to say about her experience with UKOSS...*



*The team at University of Liverpool and our patient representative approached UKOSS with an initial idea to study preterm prelabour rupture of membranes (PPROM) under 23 weeks of pregnancy. I attended a very supportive UKOSS meeting where the proposal was given careful consideration. The UKOSS team helpfully guided us through the process of producing a data collection form, including the types of questions that do and don't work. UKOSS also helped us obtain funding for the study, and the funders were especially receptive to the proven track record of UKOSS.*

***The funders even commented that this was a very good value study!***



**THIS MONTH**

- UKOSS Steering Committee Vacancy
- Housekeeping update



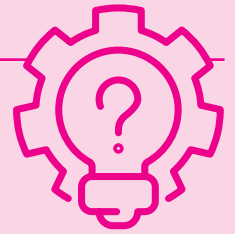
## Hospital Monthly Reporting Rates over SIX MONTHS (Sept 2025 – Feb 2026)

6 months reported, 4 or 5 months reported, 2 or 3 months reported, 1 month reported, 0 months reported

Aberdeen Maternity Hospital	Northwick Park Hospital	Colchester General Hospital
Airedale General Hospital	Nottingham City Hospital	Good Hope Hospital
Altnagelvin Area Hospital	Ormskirk District General Hospital	Guy's and St Thomas' Hospital
Aneurin Bevan University Health Board	Pilgrim Hospital	Hereford County Hospital
Antrim Hospital	Pinderfields General Hospital	Ipswich Hospital
Arrowe Park Hospital	Princess Alexandra Hospital	James Cook University Hospital
Ayrshire Maternity Unit	Princess Anne Hospital	Jersey General Hospital
Barnet Hospital (Royal Free London NHS Foundation Trust)	Princess Elizabeth Hospital (Guernsey)	Liverpool Women's Hospital
Barnsley Hospital	Princess of Wales Hospital	Ninewells Hospital & Medical School
Basildon University Hospital	Princess Royal Hospital (Telford)	North Manchester General Hospital
Basingstoke and North Hampshire Hospital	Queen Alexandra Hospital	Peterborough City Hospital
Bassetlaw Hospital	Queen Charlotte's and Chelsea Hospital	Prince Charles Hospital
Bedford Hospital	Queen Elizabeth Hospital (Gateshead)	Queen's Medical Centre
Borders General Hospital	Queen Elizabeth Hospital (King's Lynn)	Raigmore Hospital
Bradford Royal Infirmary	Queen Elizabeth Hospital (Woolwich)	Royal Albert Edward Infirmary
Bronglais Hospital	Queen Elizabeth the Queen Mother Hospital	Royal Bolton Hospital
Broomfield Hospital	Queen Elizabeth University Hospital (Glasgow)	Royal Derby Hospital
Caithness General Hospital	Queen's Hospital (Burton-on-Trent)	Royal Oldham Hospital
Calderdale Royal Hospital	Queen's Hospital (Romford)	Scarborough Hospital
Chelsea & Westminster Hospital	Rosie Maternity Hospital	South West Acute Hospital
Chesterfield Royal Hospital	Rotherham District General Hospital	Southend University Hospital
Conquest Hospital (East Sussex Healthcare NHS Trust)	Royal Alexandra Hospital	Southmead Hospital
Countess of Chester Hospital	Royal Berkshire Hospital	St Mary's Hospital (Isle of Wight)
Craigavon Area Hospital	Royal Bournemouth Hospital	St Mary's Hospital (Manchester)
Croydon University Hospital	Royal Cornwall Hospital	St Richard's Hospital
Cumberland Infirmary	Royal Free Hospital	Stepping Hill Hospital
Daisy Hill Hospital	Royal Hampshire County Hospital	Tameside General Hospital
Darent Valley Hospital	Royal Lancaster Infirmary	Watford General Hospital
Darlington Memorial Hospital	Royal Surrey County Hospital	Worcestershire Royal Hospital
Derriford Hospital	Royal United Hospital	Worthing Hospital
Diana Princess of Wales Hospital	Royal Victoria Infirmary	Furness General Hospital
Doncaster Royal Infirmary	Salisbury District Hospital	Hinchingbrooke Hospital
Dorset County Hospital	Scunthorpe General Hospital	John Radcliffe Hospital
Dumfries & Galloway Royal Infirmary	Simpson Centre for Reproductive Health	Leicester Royal Infirmary
East Surrey Hospital	Singleton Hospital	Manor Hospital (Walsall)
Epsom General Hospital	St George's Hospital	Milton Keynes University Hospital
Forth Valley Royal Hospital	St Helier Hospital	Princess Royal University Hospital
Frimley Park Hospital	St James's University Hospital	Royal Devon & Exeter Hospital
George Eliot Hospital	St John's Hospital	St Mary's Hospital (London)
Glan Clwyd District General Hospital	St Michael's Hospital	The Great Western Hospital
Glangwili General Hospital	St Peter's Hospital	University Hospital of North Midlands
Gloucestershire Royal Hospital	Stoke Mandeville Hospital	The Hillingdon Hospital
Harrogate District Hospital	Sunderland Royal Hospital	Whipps Cross University Trust Hospital
Heartlands Hospital	The Jessop Wing	Birmingham Women's Hospital
Homerton University Hospital	The Portland Hospital	Princess Royal Hospital (Haywards Heath)
Hull Royal Infirmary	The Tunbridge Wells Hospital	Princess Royal Maternity Hospital
James Paget University Hospital	Torbay Hospital	Royal Jubilee Maternity Service
Kettering General Hospital	Ulster Hospital	Royal Sussex County Hospital
King's College Hospital	University College Hospital	
King's Mill Hospital	University Hospital Coventry	
Kingston Hospital	University Hospital Lewisham	
Lancashire Teaching Hospitals (Royal Preston Hospital)	University Hospital of North Durham	
Lancashire Women and Newborn Centre	University Hospital of North Tees	
Leeds General Infirmary	University Hospital of Wales	
Leighton Hospital	Victoria Hospital (Blackpool)	
Lincoln County Hospital	Victoria Hospital (Kirkcaldy)	
Lister Hospital	Warrington Hospital	
Luton and Dunstable University Hospital	Warwick Hospital	
Medway Maritime Hospital	West Cumberland Hospital	
Midland Metropolitan University Hospital	West Suffolk Hospital	
Musgrove Park Hospital	Western Isles Hospital	
New Cross Hospital	Wexham Park Hospital	
Nobles Hospital (Isle of Man)	Whiston Hospital	
Norfolk & Norwich University Hospital	Whittington Hospital	
North Devon District Hospital	William Harvey Hospital	
North Middlesex University Hospital	Wishaw General Hospital	
Northampton General Hospital	Wrexham Maelor Hospital	
Northumbria Specialist Emergency Care Hospital	Wythenshawe Hospital	
	York Hospital	
	Ysbyty Gwynedd District General Hospital	

**Leicester General Hospital**  
**Newham General Hospital**  
**Royal London Hospital**  
**Russells Hall Hospital**  
**West Middlesex University Hospital**  
**Yeovil Women's Hospital**

## TAC Data Queries



The TAC (Transabdominal Cerclage) study has ended and we are in the process of requesting outstanding data from submitted forms. **Thank you to all the reporters who have returned TAC data queries, we appreciate your efforts!** If you have received a request for outstanding data, we would be extremely grateful if you could return all data query requests as soon as possible to ensure we have a complete and accurate dataset.

## Star Reporters

We would like to thank **Elizabeth Bonney** from **St James' University Hospital** for returning TAC queries extremely promptly and **Lucy Oliver** from **Whipps Cross University Trust Hospital** for getting reporting back on track.

*Your edible goodies will be in the post very soon!*



## Primary Ciliary Dyskinesia case identification

We understand that some reporters are struggling to accurately identify women who meet the criteria for the PCD study. Whilst we would expect cases of PCD to be discussed within the obstetric or maternal medicine teams and therefore flagged this way, we realise this might not happen in all cases. In addition to accessing digital records and utilising perinatal team meetings and groups, it may also be helpful to contact the local respiratory team or local genetic services as they will be aware of any women who fit the following case definition:

**'All pregnant women with a diagnosis of primary ciliary dyskinesia (PCD) either prior to or during the current pregnancy who are booked for antenatal care in a UK obstetric unit'**

If you have any concerns about case identification for PCD then please contact the UKOSS team at [ukoss@npeu.ox.ac.uk](mailto:ukoss@npeu.ox.ac.uk).



## Case Report Summary for Studies up until the end of March 2026

Study	Actual number of reported cases	Data collection forms returned	Number of forms returned that were found to be not cases / reported in error	Data Collection forms returned that are confirmed cases	Expected number of confirmed cases
Amniotic Fluid Embolism	457	440	173	267	254
HLH*	16	11	2	9	4
Peripartum hysterectomy – CASES ( <i>study now ended</i> )	322	266	11	255	425
Peripartum hysterectomy – CONTROLS	N/A	482	N/A	N/A	N/A
Primary Ciliary Dyskinesia	3	2	1	1	27
Severe Respiratory Virus – RECOVERY & REMAP-CAP trials	35	35	33	2	202

\*Haemophagocytic Lymphohistiocytosis (HLH) or Macrophage Activation Syndrome (MAS)

## Housekeeping Update

The UKOSS team has moved offices! This should not impact our reporters in any way however we wanted to remind reporters **not to post anything to our previous address**. The main UKOSS telephone (01865 617764) is now back in action and can be called if you have any questions.



## Would you like to represent Scotland on the UKOSS Steering Committee?

The UKOSS Steering Committee is multi-disciplinary and meets three times a year. Its main responsibilities are to consider applications for new studies on the UKOSS programme and to monitor the progress of ongoing studies. Membership is not remunerated but meetings may be considered as part of continuing professional development.

Applications are assessed on the basis of the following desirable criteria:

- Evidence of contribution to UKOSS at a local level: for example, co-ordinating UKOSS reporting at a local level, returning monthly reports and completing data collection forms.
- Evidence of forging links within and without ones own professional group and with wider multi-disciplinary teams.
- Evidence of interest in UKOSS: for example, proposing new topic areas, making study applications and/or using UKOSS data in presentations or publications.
- Research, audit and confidential enquiry or clinical governance experience in obstetrics/maternity care.
- Experience of committee work (local or national).

**The UKOSS Steering Committee currently has a vacancy for a Scottish Representative.**

If you would like to apply, please submit a two page CV and a short covering letter stating why you would like to undertake the role to UKOSS at [ukoss@npeu.ox.ac.uk](mailto:ukoss@npeu.ox.ac.uk).

For an informal discussion, please contact Melanie O'Connor, UKOSS Programme Manager ([melanie.oconnor@npeu.ox.ac.uk](mailto:melanie.oconnor@npeu.ox.ac.uk)).



## GMC Revalidation and NMC Continuing Professional Development

We are aware that as part of your GMC revalidation or NMC Continual Professional Development, you are required to provide evidence of participation in national audit and research. If any UKOSS reporters would like to receive a certificate confirming their contribution to UKOSS, please email us at [ukoss@npeu.ox.ac.uk](mailto:ukoss@npeu.ox.ac.uk) and we will get one sent to you.



**NPEU**

Follow us  @NPEU\_UKOSS  @ukoss.bsky.social  
Email: [ukoss@npeu.ox.ac.uk](mailto:ukoss@npeu.ox.ac.uk) Web: [www.npeu.ox.ac.uk/ukoss](http://www.npeu.ox.ac.uk/ukoss)  
Admin team: 01865 617764

Studies are additionally funded by Elizabeth Garrett Anderson Hospital Charity, portfolio funders to the RECOVERY and REMAP-CAP Trials and Tommy's Charity

