



Royal College of
Obstetricians
and Gynaecologists

NEWSLETTER 75 - July 2025

Pulmonary Aspiration in Pregnancy!

We are pleased to announce that the results for the Pulmonary Aspiration in pregnancy study have now been published in NIHR Open Research.

Pulmonary aspiration is defined as the inhalation of foreign material below the level of the vocal cords and into the lower respiratory tract and is the most frequent cause of death in association with airway management complications during general anaesthesia. Pregnant women are at increased risk of aspiration due to a number of factors including delayed gastric emptying and increased intragastric pressure. The aims of this case-control study were to describe the incidence, risk factors, management and outcomes of pulmonary aspiration in the UK.

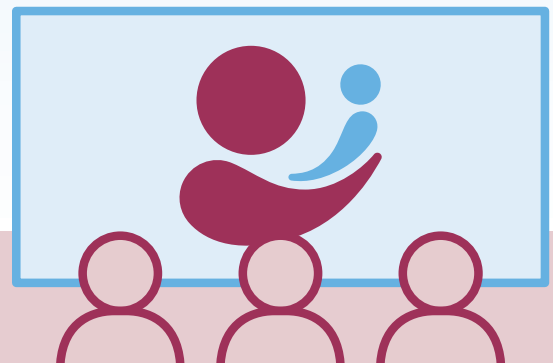
Between September 2013 and August 2016 there were 12 cases of pulmonary aspiration identified (incidence of 5.2 per 1,000,000 maternities). Controls (n=1982) were obtained from four UKOSS studies conducted between 2005 and 2014.

The study found that cases were significantly more likely than controls to undergo caesarean section and to receive general anaesthetic for caesarean section. It was also found that gestation was shorter in cases than controls and that women who aspirated were significantly more likely to be admitted to intensive care than controls. In terms of infant outcomes, it was found that infants of women who aspirated had significantly lower Apgar scores and were more likely to be admitted to the neonatal intensive care unit or be stillborn compared with infants of women in the control group.

This study confirmed that pulmonary aspiration in the UK is rare, however it does remain a risk of general anaesthesia. Future research needs to focus on developing methods to accurately identify pregnant women at risk of aspiration.

The full paper can be found [here](#)

Reference: Lucas N, Gooda A, Tunn R et al. Pulmonary aspiration during pregnancy or immediately postpartum in the UK: A population-based case-control study [version 1; peer review: 3 approved, 1 approved with reservations]. NIHR Open Res 2025, 5:2 (<https://doi.org/10.3310/nihropenres.13797.1>)



Watch this space

Following the success of the UKOSS Study Day held in 2022 we are planning to hold a similar event later this year to celebrate our 20th Anniversary!

We anticipate that, as before, the event will be online and free to attend. We will share further details about the event in due course. If you have suggestions for topics or speakers you'd like to hear from, please send your thoughts to us at ukoss@npeu.ox.ac.uk

THIS MONTH

- Two vacancies on the Steering Committee
- Biologics Data Queries



Hospital Monthly Reporting Rates over SIX MONTHS Dec 2024 - May 2025)

6 months reported, 4 or 5 months reported, 2 or 3 months reported, 1 month reported, 0 months reported

Aberdeen Maternity Hospital	Princess Royal Hospital (Telford)	Altnagelvin Area Hospital
Aneurin Bevan University Health Board	Queen Alexandra Hospital	Antrim Hospital
Arrowe Park Hospital	Queen Charlotte's and Chelsea Hospital	Airedale General Hospital
Barnet Hospital (Royal Free London NHS Foundation Trust)	Queen Elizabeth Hospital (Gateshead)	Ayrshire Maternity Unit
Barnsley Hospital	Queen Elizabeth Hospital (King's Lynn)	Bassetlaw Hospital
Basildon University Hospital	Queen Elizabeth Hospital (Woolwich)	Caithness General Hospital
Basingstoke and North Hampshire Hospital	Queen Elizabeth the Queen Mother Hospital	Calderdale Royal Hospital
Bedford Hospital	Queen Elizabeth University Hospital (Glasgow)	Chelsea & Westminster Hospital
Borders General Hospital	Queen's Hospital (Burton-on-Trent)	Diana Princess of Wales Hospital
Bradford Royal Infirmary	Queen's Hospital (Romford)	Frimley Park Hospital
Bronglais Hospital	Queen's Medical Centre	Guy's and St Thomas' Hospital
Broomfield Hospital	Raigmore Hospital	Hereford County Hospital
Chesterfield Royal Hospital	Rosie Maternity Hospital	Ipswich Hospital
Colchester General Hospital	Rotherham District General Hospital	James Cook University Hospital
Conquest Hospital (East Sussex Healthcare NHS Trust)	Royal Albert Edward Infirmary	Kingston Hospital
Countess of Chester Hospital	Royal Alexandra Hospital	Lancashire Women and Newborn Centre
Craigavon Area Hospital	Royal Bournemouth Hospital	Norfolk & Norwich University Hospital
Croydon University Hospital	Royal Cornwall Hospital	North Middlesex University Hospital
Cumberland Infirmary	Royal Derby Hospital	Northumbria Specialist Emergency Care Hospital
Daisy Hill Hospital	Royal Free Hospital	Princess Royal Maternity Hospital
Darent Valley Hospital	Royal Hampshire County Hospital	Royal Berkshire Hospital
Darlington Memorial Hospital	Royal Lancaster Infirmary	Royal Bolton Hospital
Derriford Hospital	Royal Surrey County Hospital	Royal Jubilee Maternity Service
Doncaster Royal Infirmary	Royal Sussex County Hospital	Royal Oldham Hospital
Dorset County Hospital	Royal United Hospital	Stepping Hill Hospital
Dumfries & Galloway Royal Infirmary	Royal Victoria Infirmary	Tameside General Hospital
East Surrey Hospital	Salisbury District Hospital	The Great Western Hospital
Epsom General Hospital	Scunthorpe General Hospital	The Tunbridge Wells Hospital
Forth Valley Royal Hospital	Simpson Centre for Reproductive Health	University Hospital of North Midlands
George Eliot Hospital	Singleton Hospital	Furness General Hospital
Glan Clwyd District General Hospital	South West Acute Hospital	John Radcliffe Hospital
Glangwili General Hospital	Southend University Hospital	Leicester Royal Infirmary
Gloucestershire Royal Hospital	Southmead Hospital	Nobles Hospital (Isle of Man)
Good Hope Hospital	St George's Hospital	Princess Elizabeth Hospital (Guernsey)
Harrogate District Hospital	St Helier Hospital	University Hospital of North Durham
Heartlands Hospital	St James's University Hospital	West Middlesex University Hospital
Hinchingbrooke Hospital	St John's Hospital	Whipps Cross University Trust Hospital
Homerton University Hospital	St Mary's Hospital (Isle of Wight)	Hull Royal Infirmary
James Paget University Hospital	St Mary's Hospital (Manchester)	Princess Royal University Hospital
Jersey General Hospital	St Michael's Hospital	Scarborough Hospital
Kettering General Hospital	St Richard's Hospital	University College Hospital
King's College Hospital	Stoke Mandeville Hospital	Birmingham Women's Hospital
King's Mill Hospital	Sunderland Royal Hospital	Leicester General Hospital
Lancashire Teaching Hospitals (Royal Preston Hospital)	The Jessop Wing	Newham General Hospital
Leeds General Infirmary	The Portland Hospital	Princess Royal Hospital (Haywards Heath)
Leighton Hospital	Torbay Hospital	Royal Devon & Exeter Hospital
Lincoln County Hospital	Ulster Hospital	Royal London Hospital
Lister Hospital	University Hospital Coventry	Russells Hall Hospital
Liverpool Women's Hospital	University Hospital Lewisham	St Mary's Hospital (London)
Luton and Dunstable University Hospital	University Hospital of North Tees	St Peter's Hospital
Manor Hospital (Walsall)	University Hospital of Wales	The Hillingdon Hospital
Medway Maritime Hospital	Victoria Hospital (Blackpool)	
Midland Metropolitan University Hospital	Victoria Hospital (Kirkcaldy)	
Milton Keynes University Hospital	Warrington Hospital	
Musgrove Park Hospital	Warwick Hospital	
New Cross Hospital	Watford General Hospital	
Ninewells Hospital & Medical School	West Cumberland Hospital	
North Devon District Hospital	West Suffolk Hospital	
North Manchester General Hospital	Western Isles Hospital	
Northampton General Hospital	Wexham Park Hospital	
Northwick Park Hospital	Whiston Hospital	
Nottingham City Hospital	Whittington Hospital	
Ormskirk District General Hospital	William Harvey Hospital	
Peterborough City Hospital	Wishaw General Hospital	
Pilgrim Hospital	Worcestershire Royal Hospital	
Pinderfields General Hospital	Worthing Hospital	
Prince Charles Hospital	Wrexham Maelor Hospital	
Princess Alexandra Hospital	Wythenshawe Hospital	
Princess Anne Hospital	Yeovil Women's Hospital	
Princess of Wales Hospital	York Hospital	
	Ysbyty Gwynedd District General Hospital	

The link between UKOSS and MBRRACE-UK

We would like to make all reporters aware of the direct link between UKOSS and MBRRACE-UK, the national programme of surveillance and confidential enquiries into maternal and perinatal deaths and morbidity (the Maternal, Newborn and Infant Clinical Outcomes Review Programme, commissioned by the Healthcare Quality Improvement Partnership). Reports to UKOSS form the sampling frame for cases to be included in the MBRRACE-UK maternal morbidity enquiry, therefore it is important that reports are submitted to UKOSS from all obstetric-led units across the UK to ensure that all sites are fully participating in MBRRACE-UK. The biologics in pregnancy study will form the sampling frame for the next MBRRACE-UK morbidity enquiry.

If you have any questions about this, please do contact us at ukoss@npeu.ox.ac.uk.



Biologics Data Queries

We have now processed all the data collection forms for the Biological Agents in pregnancy study and have sent out all data queries to reporters. These data queries might simply be asking for information that is missing from the form (such as unanswered questions) but they also might be querying data which is inconsistent with other information provided on the form.

We would be extremely grateful if you could return all data query requests as soon as possible to ensure we have a complete and accurate dataset. Thank you!

Please come and join our Steering Committee!

We currently have **two** vacancies on the UKOSS Steering Committee – a Consultant Obstetrician and a Representative from Scotland.

The UKOSS Steering Committee is multi-disciplinary and meets three times a year (two virtually and one face-to-face). Its main responsibilities are to consider applications for new studies on the UKOSS programme and to monitor the progress of ongoing studies. Membership is not remunerated but meetings may be considered as part of continuing professional development. Travel expenses are provided.

Further information about UKOSS and the roles can be found [here](#)

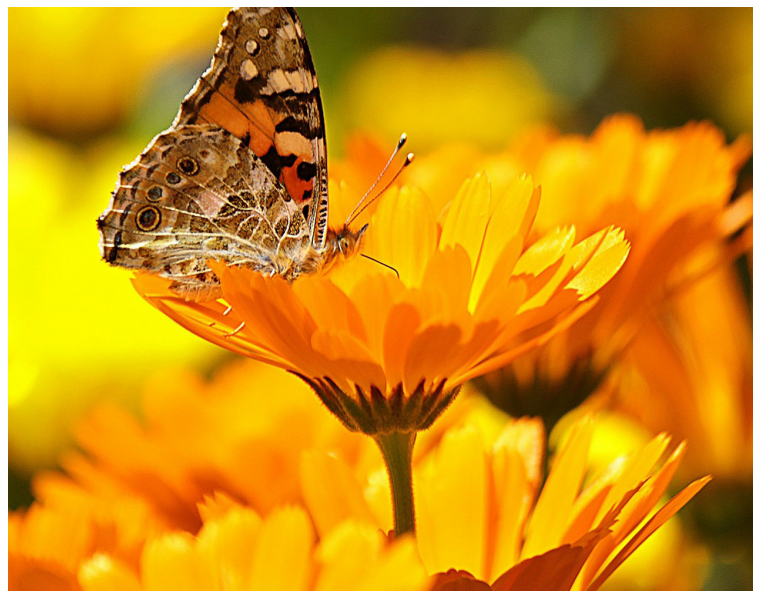
If you would like to apply, please submit a two page CV and a short covering letter stating why you would like to undertake the role to UKOSS at ukoss@npeu.ox.ac.uk.

The deadline for applications is **1st September 2025**.

If you have any questions, please contact ukoss@npeu.ox.ac.uk.



- To keep a record of the case IDs for all the cases you report and also the corresponding patient details.
- To pass on your record of UKOSS cases to another reporter or colleague if you change roles or retire and make UKOSS aware of the change.



Case Report Summary for Studies up until the end of June 2025

Study	Actual number of reported cases	Data collection forms returned	Number of forms returned that were found to be not cases / reported in error	Data Collection forms returned that are confirmed cases	Expected number of confirmed cases
Amniotic Fluid Embolism	447	428	171	257	245
HLH	7	4	1	4	2
Long-term non-invasive ventilation in pregnancy	98	75	19	56	100
Peripartum hysterectomy – CASES	183	139	6	133	249
Peripartum hysterectomy – CONTROLS	N/A	252	N/A	N/A	N/A
Severe Respiratory Virus – RECOVERY & REMAP-CAP trials	34	2	32	2	164
Transabdominal cerclage (ended 30/04/25)	92	73	20	53	112

Star Reporters

We would like to thank **Bridget Tuohy (Southmead Hospital)** for returning several sets of completed data collection forms (case and controls) for the peripartum hysterectomy study, **Zoe Brockbank (St. Helier Hospital)** for the fast turnaround on UKOSS queries and **Gareth Roberts (Ysbyty Gwynedd District General Hospital)** for long and consistent contribution to UKOSS.

Your edible goodies will be in the post very soon!



GMC Revalidation and NMC Continuing Professional Development

We are aware that as part of your GMC revalidation or NMC Continual Professional Development, you are required to provide evidence of participation in national audit and research. If any UKOSS reporters would like to receive a certificate confirming their contribution to UKOSS, please email us at ukoss@npeu.ox.ac.uk and we will get one posted out to you.

