

Key messages

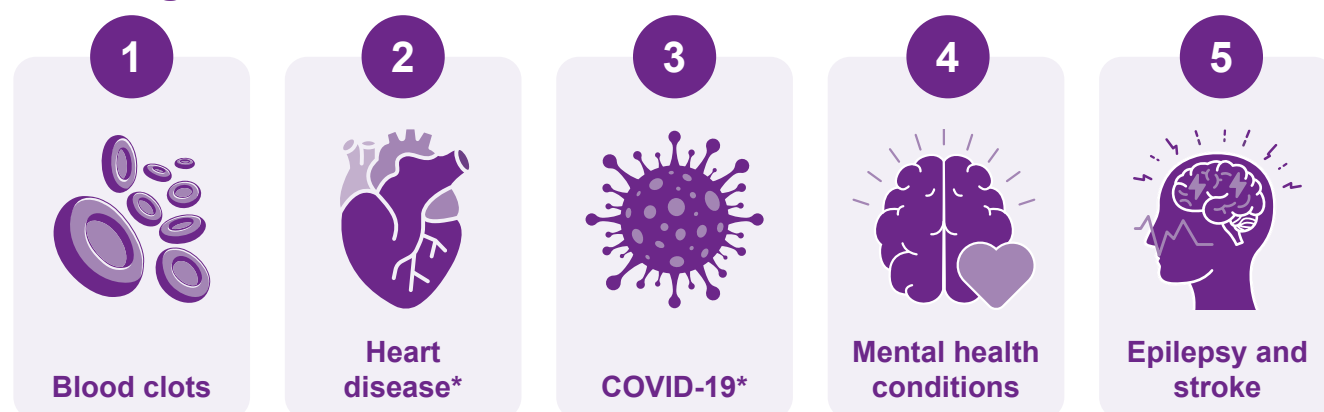
from the surveillance report 2025



In 2021-23, **257 women died** during or up to six weeks after pregnancy among 2,004,184 women giving birth in the UK

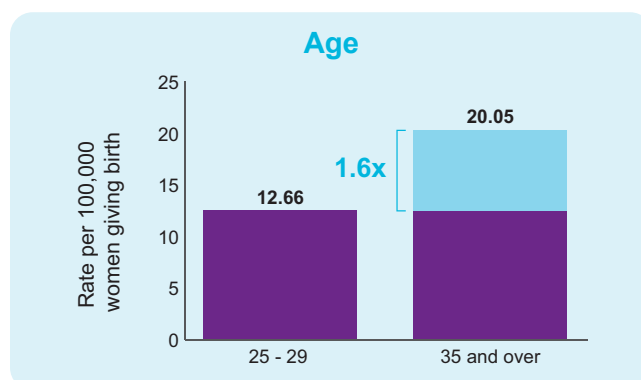
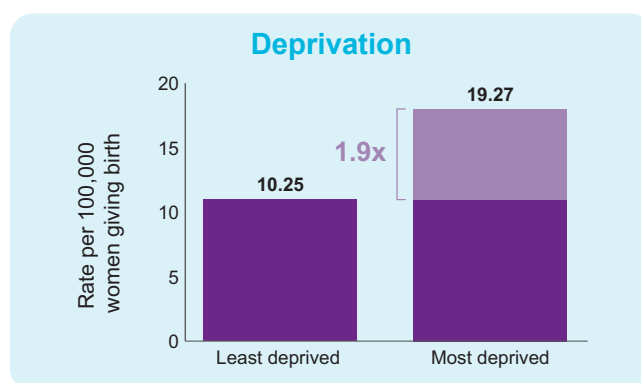
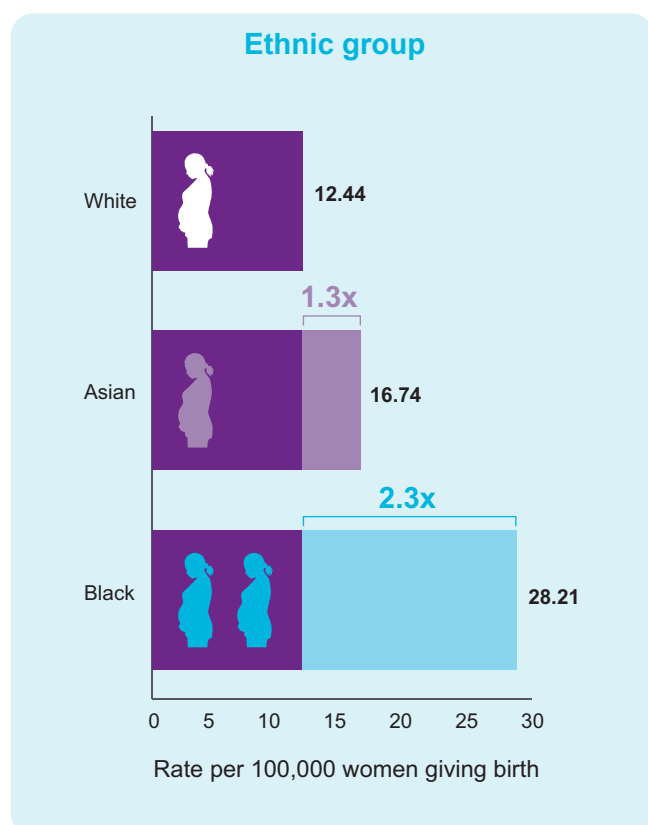
This represents a maternal death rate of **12.82 women** per 100,000 women giving birth

Leading causes of maternal deaths



*Responsible for the same number of maternal deaths in 2021-23

Inequalities in maternal mortality



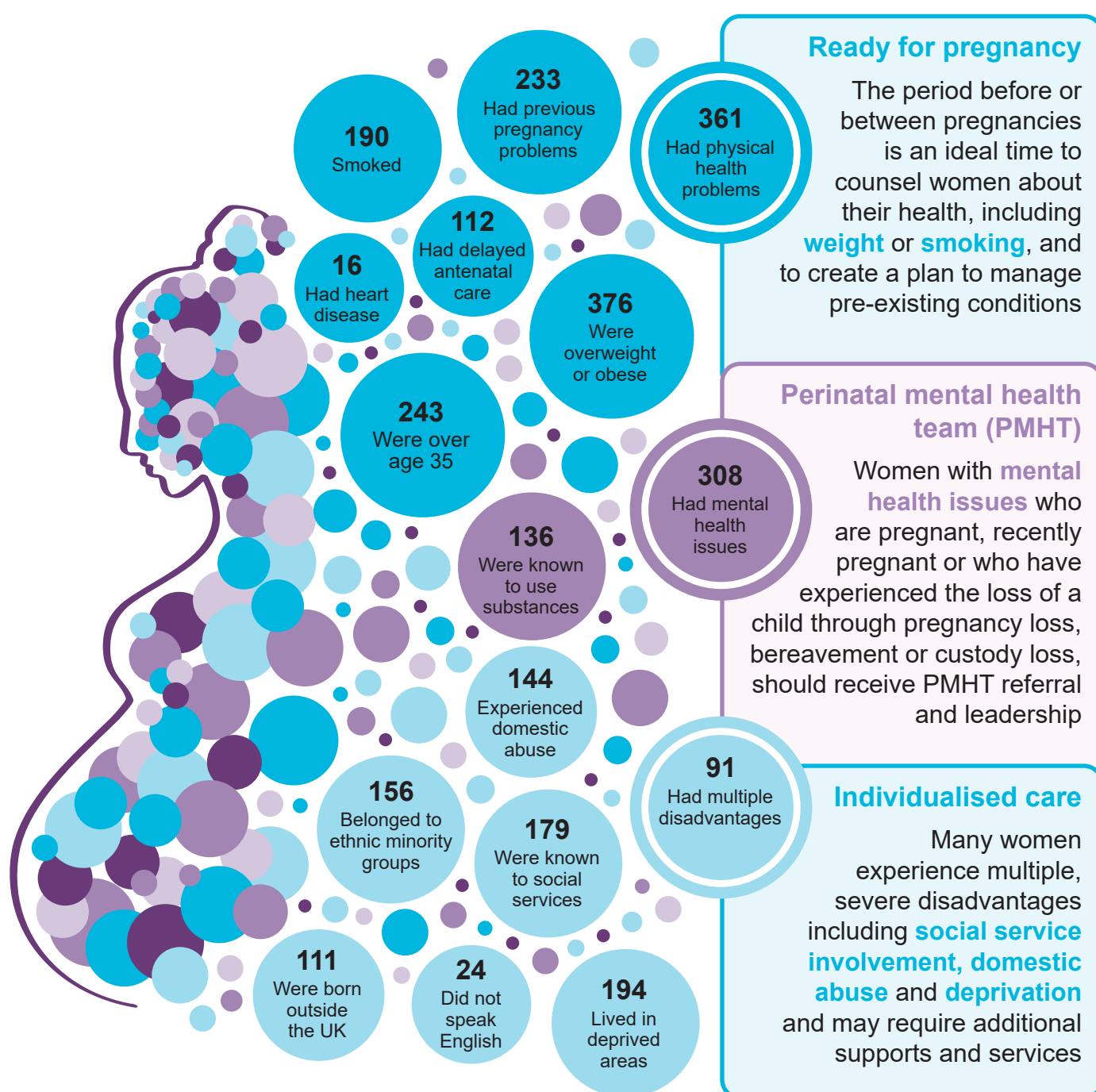
Key messages

from the confidential enquiries 2025

A constellation of biases

The 2025 MBRRACE-UK report looks at the care of **643 women** who died during or up to one year after pregnancy in the UK and Ireland

Of these women, **583 (91%)** faced multiple interrelated challenges

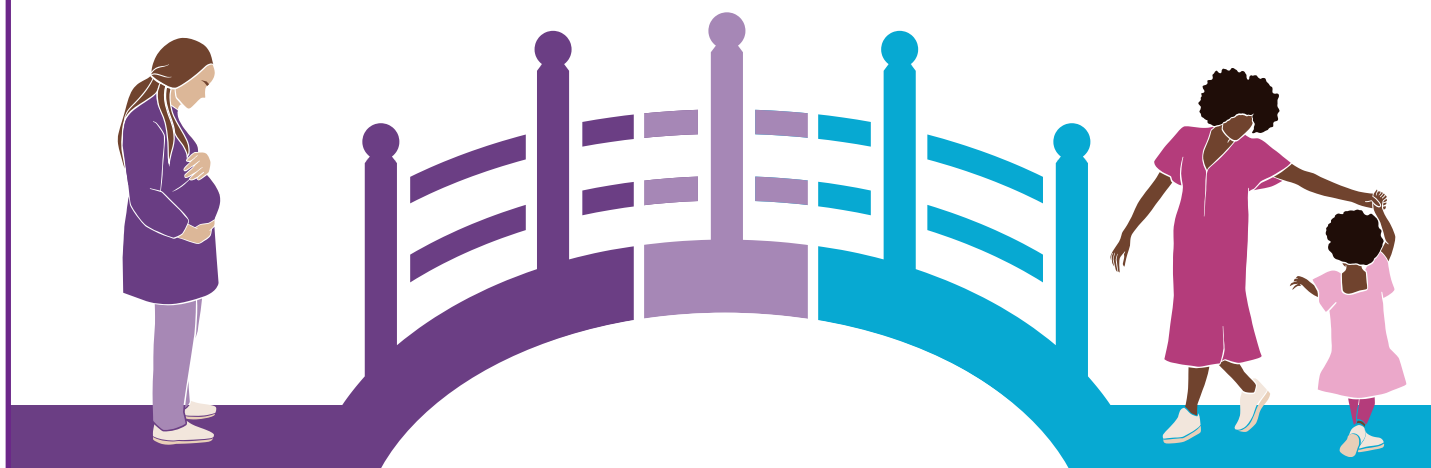


Key messages

from the report 2025



Bridging the gaps in maternity care



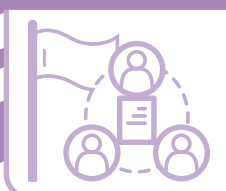
National recommendations for the care of women with medical and social challenges

Urgent referral pathways



Set up an urgent referral pathway to triage high-risk women for senior or specialist review in early pregnancy

Information sharing



Ensure codes for domestic abuse in women's records are used and information is shared appropriately in the event of safeguarding concerns

Discharge summaries



Discharge summaries for primary care should include a summary box of actions concerning conditions that require postnatal management